

# PENDANT LIGHT A440

DESIGN ALVAR AALTO 1954



**artek**



**EN** Installation may only be carried out by a qualified electrician.

**FI** Asennuksen saa tehdä ainoastaan sähköalan ammattilainen.

**SV** Endast elektriker får utföra monteringen.

**NO** Skal kun monteres av en autorisert elektriker.

**DA** Må kun monteres af en elektriker.

**DE** Darf nur durch eine Elektrofachkraft montiert werden.

**FR** Les travaux d'installation ne doivent être effectués que par un électricien spécialisé.

**ES** El montaje únicamente debe ser realizado por un electricista cualificado

**NL** Mag alleen door een elektricien worden gemonteerd.

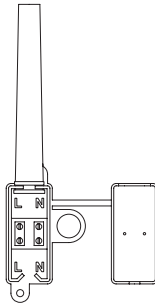
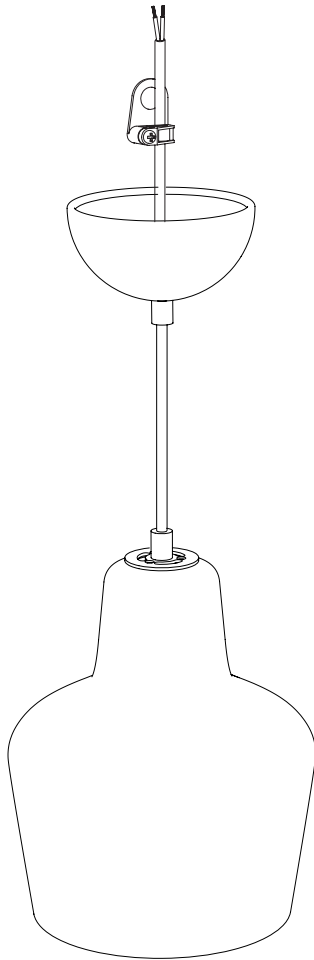
**IT** Il montaggio può essere realizzato solo da un elettricista specializzato.

**EL** Η συναρμολόγηση επιτρέπεται να γίνει μόνο από ηλεκτρολόγο.

**PL** Podłączenie powierzać tylko wykwalifikowanemu elektrykowi.

**PT** Só pode ser montado por um electricista competente para o efeito.

**CS** Montáž smí provádět výhradně kvalifikovaný elektrikář.



220-240 V ~ 50-60 Hz  
DRR...E27 max. 12W



(a.)



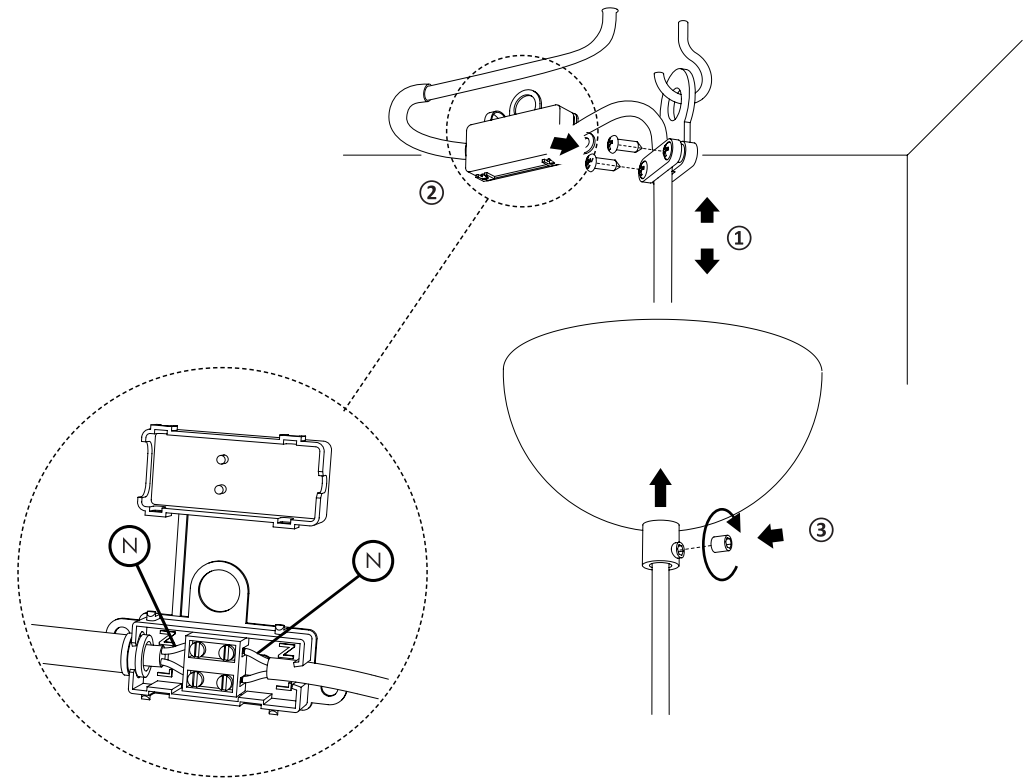
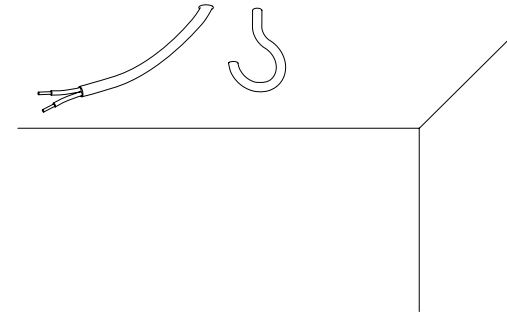
(b.)



(c.)



(d.)

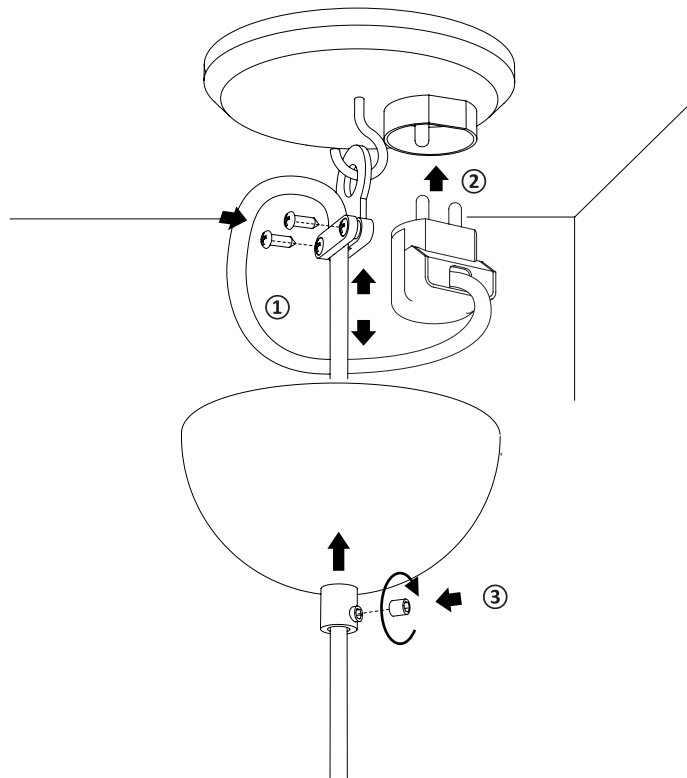
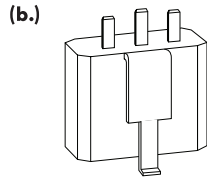
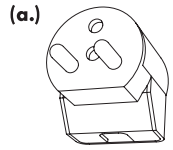
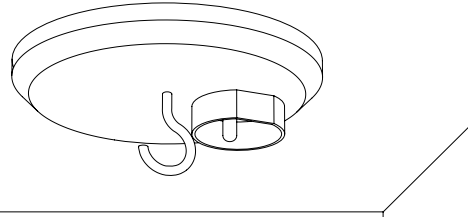


**B**

**EN** Installation of ceiling plug may only be carried out by a qualified electrician. Ceiling plug **(a. b.)** is not included in the package.

**FI** Kattopistotulppa tulee asentaa valtuutetun sähköasentajan toimesta. Kattopistotulppa **(a. b.)** ei kuulu valaisimen toimitussisältöön.

**SE** Installation av takkontakt får endast utföras av auktoriserad elektriker. Takkontakt **(a. b.)** ingår ej i förpackningen.



ARTEK OY AB  
MANNERHEIMINTIE 12 B  
00100 HELSINKI, FINLAND  
[WWW.ARTEK.FI](http://WWW.ARTEK.FI)